

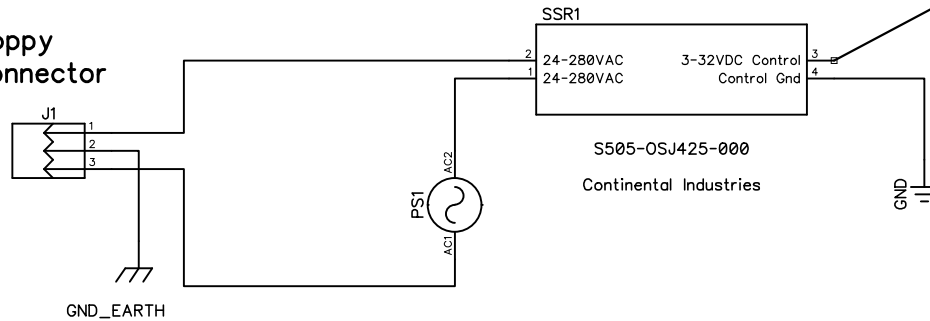
By controlling the solid state relay from this part of the circuit, it eliminates the disk spin motor from running constantly. Instead, with this circuit, the motor will only turn on when the floppy unit is "selected."

If the drive is configured to use the "DS" jumper, then the motor will turn on as soon as the "drive select" line configured for this drive becomes active.

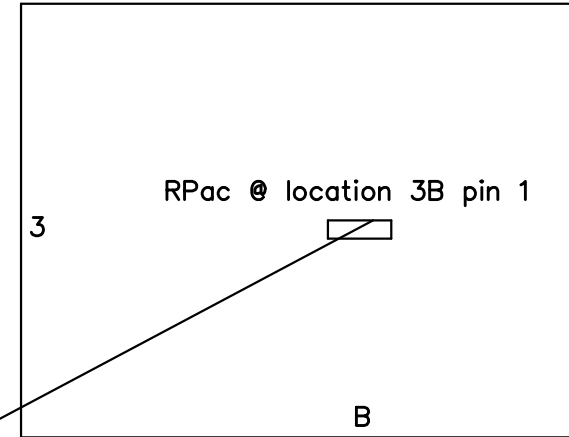
If the drive is configured to use the "HL" jumper, then the motor will turn on as soon as the "head load" line becomes active.

Normally the "DS" option will be used.

Shugart 801 floppy drive motor connector



Shugart 801 floppy controller PCB



Wire manually attached from 801 PCB to solid state relay control line.

the logic level on control point is:
3.5V when the drive is selected
0V when the drive is not selected

Current draw is about 3mA

The following jumpers should be present on the Shugart 801 floppy controller PCB:

"X", "C", "DS1-4" depending which drive, "T3/T4/T5/T6" on last drive on cable, "T2", "DS", "Z", "800", "A"
(all other jumpers should be removed)

Note: it is important to ALL of the grounds on the power connector J5 - as logic ground is NOT connected to 24V ground on the PCB.